

N 1/4 COR SEC 11, T 17N, R 66W

057848

RECEIVED
LARAMIE COUNTY
CHEYENNE, WY.

CERTIFIED LAND CORNER RECORDATION '89 MAY 30 AM 11 27

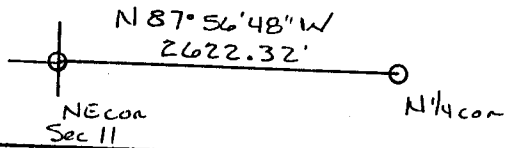
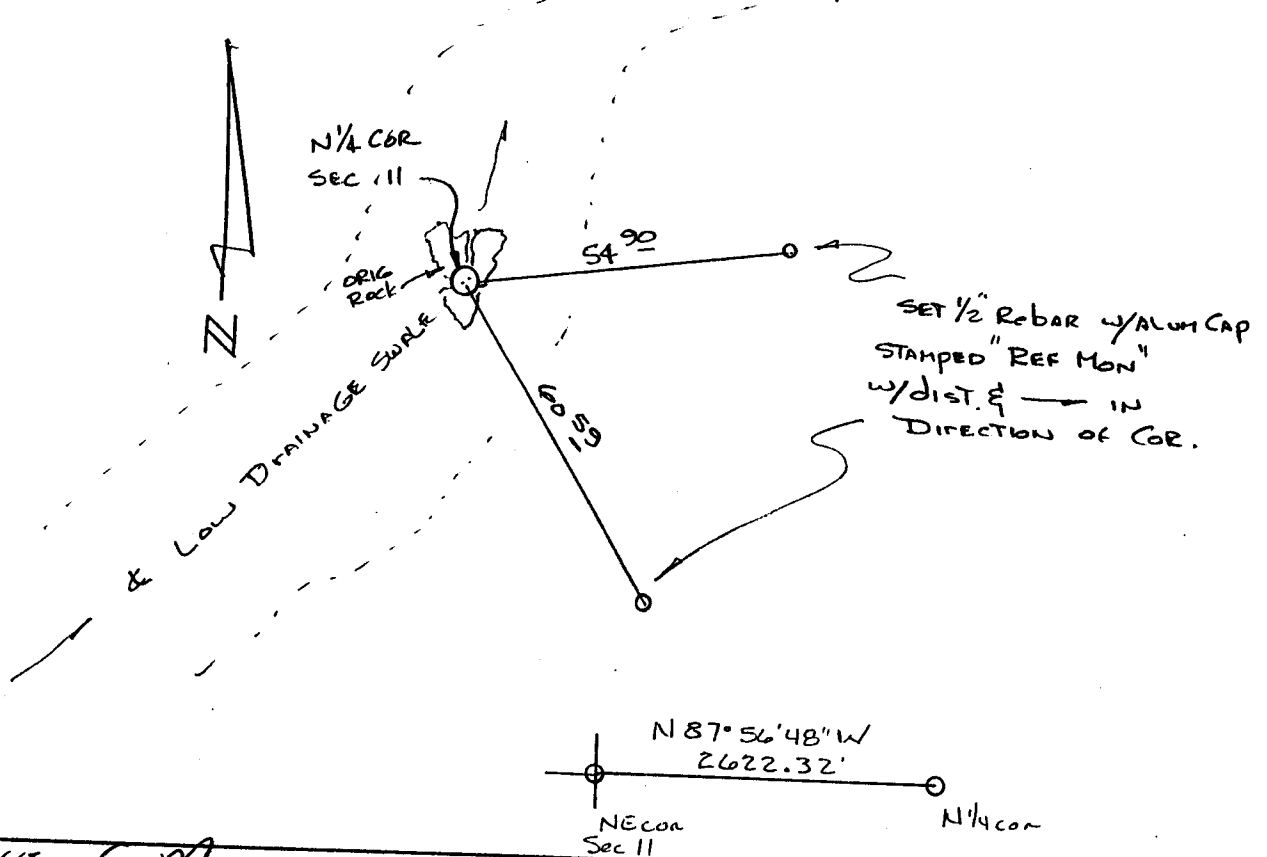
DESCRIPTION OF CORNER EVIDENCE FOUND, AND ORIGINAL RECORD (If known)

FOUND ORIG. LIMESTONE CORNER STONE BROKEN & LYING FLAT.
NO CHISEL MARKS

DESCRIPTION OF MONUMENT AND ACCESSORIES ESTABLISHED
TO PERPETUATE THE ORIGINAL LOCATION OF THIS CORNER:

SET A CORP OF ENGINEERS BRASS CAP AFFIXED TO A 5/8" x 30"
REBAR IN CENTER OF ORIGINAL BROKEN STONE. 04" ABOVE GRO. w/ MOUND
OF STONE AROUND IT. CAP STAMPED T 17N, R 66W
1/4 2/11 1989 TIED OFF AS SHOWN

SKETCH, WITH COURSE AND DISTANCE TO ADJACENT CORNER IF DETERMINED IN THIS SURVEY.
(May Sketch or Paste Reproduction on Reverse Side.)

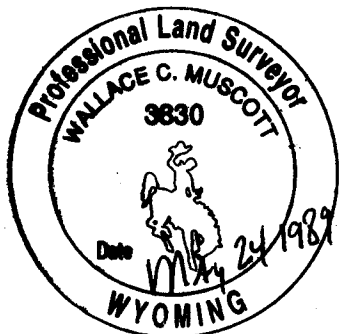


I, Wallace C Muscott certify that I have carefully performed or reviewed the work done on the diagrammed corner as reported on this recordation form and approve the same.

Wallace C Muscott 3830
Signature of Surveyor Registration No.

STATE OF WYOMING,
Office of Clerk and Recorder,
County of _____

This "corner record" was filed for record on the _____ day of _____, 19____, was noted on the cross-index plat and is assigned page No. _____, in book No. _____



BOOK 1274

County Official Janet C Whitehead

Cross Index No. E-19	T. 17 N	R. 66 W.	Mer. Lot
_____	_____	_____	Mer.
_____	_____	_____	Mer.
_____	_____	_____	Mer.
_____	_____	_____	Mer.
_____	_____	_____	Mer.
_____	_____	_____	Mer.